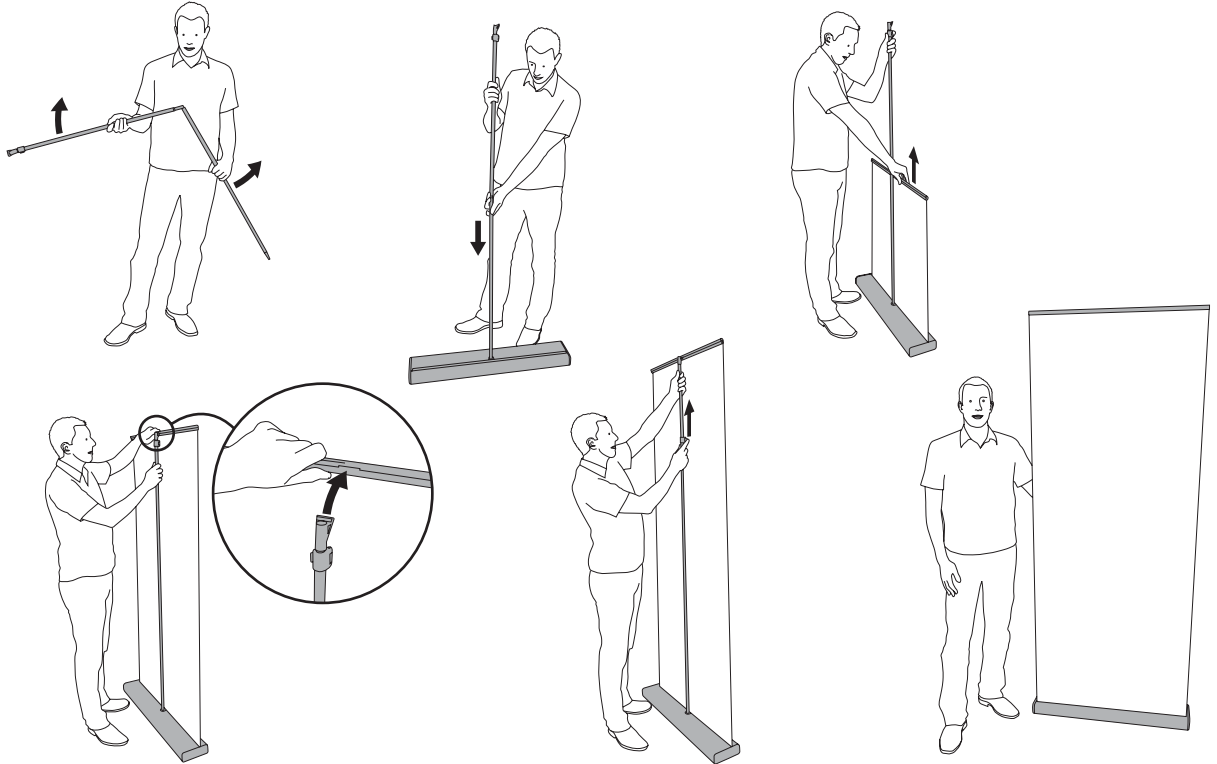




medieninsel

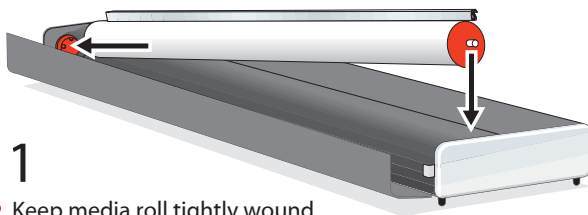
EXPAND M2

Set up - Step by step



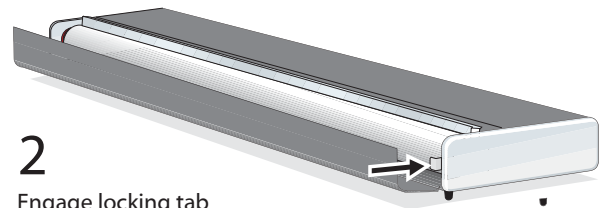
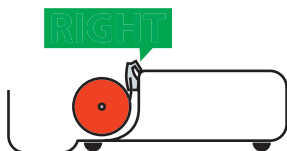
How to switch media roll

Pat.pend.



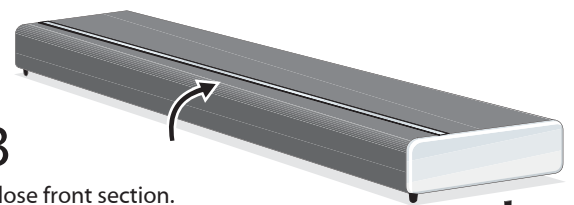
1

- Keep media roll tightly wound
- The top profile should be in the position pictured below
- Place hollow end of media roll on to left side connector knob
- Then place the right side of the media roll with the metal pin into the locking slot



2

Engage locking tab by pushing it inwards.



3

Close front section.

Infoline +49 (0)180 100 501 0* | www.medieninsel.com

* (3,9 ct./Min. Festnetz, max. 42 ct./Min. Mobilfunk)